

Exam : Juniper JN0-532

Title : FWV,Specialist(JNCIS-FWV)

Version : Demo

Important Note, Please Read Carefully

Other examsoon products

[All examsoon IT Exam Products](#)

Our products of Offline Testing Engine

Use the offline Testing engine product to practice the questions in an exam environment.

Build a foundation of knowledge which will be useful also after passing the exam.

[examsoon Testing Engine](#)

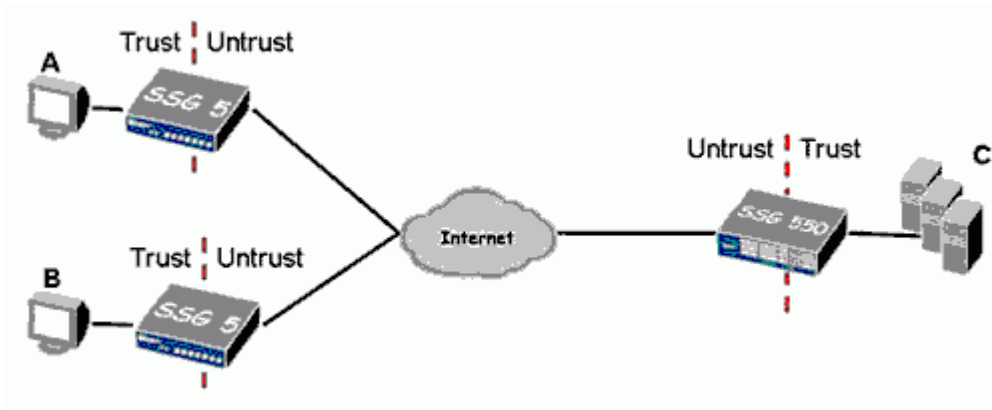
Guarantee

Examsoon provides the most competitive quality of all exams for the customers, we guarantee your success at the first attempt with only our Certification Question&Answers, if you do not pass the exam at the first time, we will not only arrange FULL REFUND for you, but also provide you another exam of your claim, ABSOLUTELY FREE!.

Features

1. Comprehensive questions with complete details
2. Instant Downloadable in PDF form.
3. Verified Answers Researched by Industry Experts
4. Questions accompanied by exhibits
5. Drag and Drop questions as experienced in the Actual Exams.
6. These questions and answers are backed by our GUARANTEE.
7. Questions updated on regular basis.
8. Like actual certification exams our product is in multiple-choice questions (MCQs).

1. Review the exhibit.

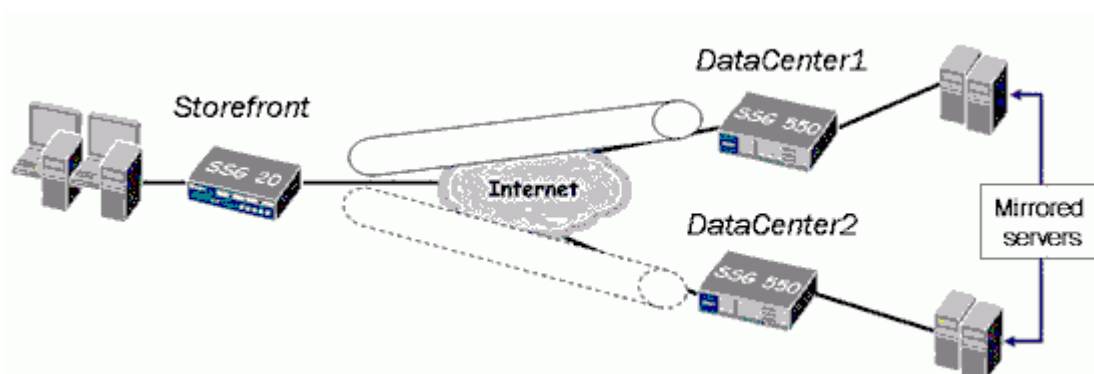


You've been asked to build a route-based hub and spoke network, with policy control for traffic travelling from spoke to spoke. Which two of the following configuration options will meet this requirement? (Choose two.)

- A. Place the spoke tunnel interfaces in the trust zone and create policies on the spokes.
- B. Place the spoke tunnel interfaces in the untrust zone and create policies on the spokes.
- C. Create a single tunnel interface in the trust zone at the hub and enable intra-zone blocking.
- D. Create separate tunnel interfaces at the hub and place them in different zones, then create policies at the hub.

Answer: BD

2. Click the Exhibit button.



In the exhibit, the firewall administrator at the Storefront is complaining that when the communication to the DataCenter1 fails, the preexisting transfers and applications are dropped when the traffic is switched to DataCenter2.

Which statement explains this behavior?

- A. SYN checking is enabled in the tunnel.

- B. The weight value for the DataCenter2 is too high.
- C. VPN monitor is misconfigured in the DataCenter2.
- D. Phase 1 and Phase 2 negotiations to DataCenter2 did not occur on time.

Answer: A

3. You have entered the command

```
set ffilter src-ip 1.1.7.250 dst-ip 10.1.10.5 ip-prot 6
```

What will be the resulting output in the debug for which this was created?

- A. If the packet has a src-ip of 1.1.7.250 or a dst-ip of 10.1.10.5 or has TCP as its protocol then it will be captured
- B. If the packet has a src-ip of 1.1.7.250 or a dst-ip of 10.1.10.5 or has UDP as its protocol then it will be captured
- C. If the packet has a src-ip of 1.1.7.250 and a dst-ip of 10.1.10.5 and has TCP as its protocol then it will be captured
- D. If the packet has a src-ip of 1.1.7.250 and a dst-ip of 10.1.10.5 and has UDP as its protocol then it will be captured

Answer: C

4. Click the Exhibit button.

```
ssg550-> get ike cookie
Active: 1, Dead: 0, Total 1
522f/3, 1.1.1.20->1.1.1.10: PRESHR/grp2/3DES/SHA,
xchg(2) usr(d-l/u-l)
resent-tmr 0 lifetime 28800 lt-recv 28800
nxt_rekey 25813 cert-expire 0
  initiator 1, in-out 1, err cnt 0, send dir 0,
  cond 0
nat-traversal map not available
ike heartbeat          : disabled
ike heartbeat last rcv time: 0
ike heartbeat last snd time: 0
XAUTH status: 0
```

In the exhibit, which two can be determined about the VPN? (Choose two.)

- A. NAT-traversal is enabled.
- B. The rekey interval is 8 hours.
- C. This device initiated the Phase 1 negotiations.

D. The certificate used in this exchange is set to never expire.

Answer: BC

5. You have created a virtual router called VSYS-VR and made it shareable. You then create the VSYS using the WebUI, telling it to use an existing VR and selecting the VR called VSYS-VR.

What is the status of the virtual router after you create the VSYS?

A. The router will be the default router but will no longer be shared.

B. The router will be the default router and will still have a shareable status.

C. The system will not let you use a shared virtual router when you create a new VSYS. The initial virtual router must be private.

D. The system will not create a private VR for the VSYS but will assign the untrust-VR as the default router.

The shared Virtual router will not be the default router.

Answer: B

6. Click the Exhibit button.

```
ns(M)-> get config | include nsrp
set nsrp cluster id 1
set nsrp vsd-group id 0 priority 100
set nsrp monitor interface ethernet1
set nsrp monitor interface ethernet2
set nsrp monitor interface ethernet3
set nsrp monitor track-ip ip
set nsrp monitor track-ip ip 1.1.1.1
ns(M)-> get nsrp monitor track-ip
ip address interval threshold wei interface meth fail-count success-rate
1.1.1.1 1 3 1 auto 167 0%
```

Review the exhibit. Track-ip has failed on the device, but the device did not fail over to the second unit in the cluster:

Why has failover not occurred?

A. The physical interfaces have not failed.

B. The track-ip interval is not sufficient to cause failover.

C. The track-ip address weight is not sufficient to cause failover.

D. The track-ip address threshold is not sufficient to cause failover.

Answer: C

7. Which three OSPF parameters are interface parameters? (Choose three.)

- A. cost
- B. priority
- C. neighbor list
- D. summarization
- E. advertise default route

Answer: ABC

8. To which three ScreenOS components can a policy-based routing policy be bound? (Choose three.)

- A. zone
- B. policy
- C. interface
- D. virtual router
- E. virtual system

Answer: ACD

9. Which ScreenOS CLI command is necessary for configuring IGMP on interface ethernet0/1?

- A. set igmp interface ethernet0/1
- B. set multicast interface ethernet0/1
- C. set interface ethernet0/1 igmp router
- D. set igmp interface ethernet0/1 enable

Answer: C

10. Which command is used to verify that IGMP is running correctly?

- A. get route igmp
- B. get igmp query
- C. set igmp query interface e0/1
- D. exec igmp interface e0/1 query

Answer: D

11. Which CLI command identifies the multicast sources visible to your ScreenOS device?

- A. get route pim
- B. get igmp source all
- C. exec pim interface all query
- D. get vrouter trust-vr protocol pim

Answer: D

12. Click the Exhibit button.

```
SSG_5->get vrouter trust protocol pim mroute
trust-vr - PIM-SM routing table
-----
Register - R, Connected members - C, Pruned - P, Pending SPT Alert - G
Forward - F, Null - N , Negative Cache - E, Local Receivers - L
SPT - T, Proxy-Register - X, Imported - I, SGRpt state - Y, SSM Range Group - S
Turnaround Router - K
-----
Total PIM-SM mroutes: 2
(*, 236.1.1.1) RP 20.20.20.10 01:54:20/- Flags: LF
Zone : Untrust
Upstream : ethernet1/2 State : Joined
RPF Neighbor : local Expires : -
Downstream :
ethernet1/2 01:54:20/- Join 0.0.0.0 FC
(10.10.10.1/24, 238.1.1.1) 01:56:35/00:00:42 Flags: TLF Register Prune
Zone : Trust
Upstream : ethernet1/1 State : Joined
RPF Neighbor : local Expires : -
Downstream :
ethernet1/2 01:54:20/- Join 236.1.1.1 20.20.20.200 FC
```

In the exhibit, what is the source IP address of the multicast traffic?

- A. 236.1.1.1
- B. 10.10.10.1
- C. 20.20.20.10
- D. 20.20.20.200

Answer: B

13. Click the Exhibit button.

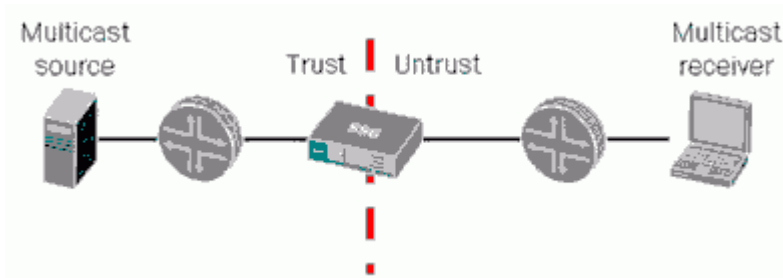
```
SSG_5->get vrouter trust protocol pim mroute
trust-vr - PIM-SM routing table
-----
Register - R, Connected members - C, Pruned - P, Pending SPT Alert - G
Forward - F, Null - N , Negative Cache - E, Local Receivers - L
SPT - T, Proxy-Register - X, Imported - I, SGRpt state - Y, SSM Range Group - S
Turnaround Router - K
-----
Total PIM-SM mroutes: 2
(*, 234.9.8.42) RP 192.168.20.10 01:54:20/- Flags: LF
Zone : Untrust
Upstream : ethernet1/2 State : Joined
RPF Neighbor : local Expires : -
Downstream :
ethernet2/1 01:54:20/- Join 0.0.0.0 FC
(192.168.10.2/24, 231.2.3.10) 01:56:35/00:00:42 Flags: TLF Register Prune
Zone : Trust
Upstream : ethernet1/1 State : Joined
RPF Neighbor : local Expires : -
Downstream :
ethernet2/1 01:54:20/- Join 234.9.8.42 192.168.20.200 FC
```

In the exhibit, what is the address of the multicast receiver?

- A. 234.9.8.42
- B. 192.168.10.2
- C. 192.168.20.10
- D. 192.168.20.200

Answer: D

14. Review the exhibit.



Which two of the following elements must be configured on the ScreenOS device in order to support PIM-SM? (Choose two)

- A. A multicast control policy
- B. A bootstrap router process
- C. A unicast routing protocol
- D. A static RP

Answer: AC

15. During main mode negotiations a failure has occurred while using IKE certificates.

Which message pair would you review to troubleshoot this failure?

- A. messages 1 & 2
- B. messages 2 & 3
- C. messages 3 & 4
- D. messages 5 & 6

Answer: D

16. Which two item pairs are exchanged during Phase 2 negotiations? (Choose two.)

- A. proxy-id, SA proposal list
- B. IKE cookie, SA proposal list
- C. hash [ID + Key], DH key exchange
- D. SA proposal list, optional DH key exchange

Answer: AD

17. What must be enabled to protect Phase 2 key exchanges?

- A. Phase 1 PFS
- B. Phase 2 SHA
- C. Phase 2 3-DES
- D. Phase 2 DH key exchange

Answer: D

18. Which three statements are true regarding IKE Phase 1? (Choose three.)

- A. Placing the SA proposal list in message 1 is an option.
- B. The digital certificate is used to decrypt the session key.
- C. The DH key exchange is used to validate the session key.
- D. The DH key exchange and digital certificates are both optional.
- E. The proxy-id is used to determine which SA is referenced for the VPN.

Answer: ABC

19. What must be configured differently for a route-based VPN and a policy-based VPN?

- A. proxy-id
- B. proposals
- C. remote gateway type
- D. binding the tunnel interface

Answer: D

20. You have configured the following on your device.

```
set address trust MyPC 10.1.1.5/32
```

```
set address untrust CorpNet 10.10.0.0/16
```

```
set policy from trust to untrust MyPC CorpNet any permit
```

```
set int tunnel.1 zone untrust
```

```
set int tunnel.1 ip unnumbered int bgroup1
```

```
set ike gateway GW address 1.1.1.1 outgoing-interface e0/1 preshare Secret sec-level standard
```

```
set vpn VPN gateway GW sec-level standard
```

The tunnel interface is down, so the VPN cannot function properly. What is the problem?

- A. The policy needs to have the action tunnel.
- B. The VPN needs to be bound to the tunnel interface.
- C. The tunnel interface needs to be placed in the trust zone.
- D. The tunnel interface needs to be associated with the interface in the untrust zone.

Answer: B

Examsoon.com was founded in 2006. The safer,easier way to help you pass any IT Certification exams . We provide high quality IT Certification exams practice questions and answers(Q&A). Especially [Adobe](#), [Apple](#), [Citrix](#), [Comptia](#), [EMC](#), [HP](#), [Juniper](#), [LPI](#), [Nortel](#), [Oracle](#), [SUN](#), [Vmware](#) and so on. And help you pass any IT Certification exams at the first try.

we guarantee your success at the first attempt with only our Certification Question&Answers, if you do not pass the exam at the first time, we will not only arrange FULL REFUND for you, but also provide you another exam of your claim, ABSOLUTELY FREE!

You can reach us at any of the email addresses listed below.

E-MAIL: [examsoon\(at\)hotmail.Com](mailto:examsoon(at)hotmail.Com)