

**Exam : Cisco 642-144**

**Title : IP Telephony Express Exam**

**Version : Demo**

## Important Note, Please Read Carefully

### Other examsoon products

[All examsoon IT Exam Products](#)

### Our products of Offline Testing Engine

Use the offline Testing engine product to practice the questions in an exam environment.

Build a foundation of knowledge which will be useful also after passing the exam.

[examsoon Testing Engine](#)

### Guarantee

Examsoon provides the most competitive quality of all exams for the customers, we guarantee your success at the first attempt with only our Certification Question&Answers, if you do not pass the exam at the first time, we will not only arrange FULL REFUND for you, but also provide you another exam of your claim, ABSOLUTELY FREE!.

### Features

1. Comprehensive questions with complete details
2. Instant Downloadable in PDF form.
3. Verified Answers Researched by Industry Experts
4. Questions accompanied by exhibits
5. Drag and Drop questions as experienced in the Actual Exams.
6. These questions and answers are backed by our GUARANTEE.
7. Questions updated on regular basis.
8. Like actual certification exams our product is in multiple-choice questions (MCQs).

1. Which two Tcl scripts make up the B-ACD? (Choose two.)

- A. Call Queue
- B. Auto Attendant
- C. Basic Queuing
- D. Direct Inward Dial
- E. Automated Queuing
- F. Automated Call Distributor

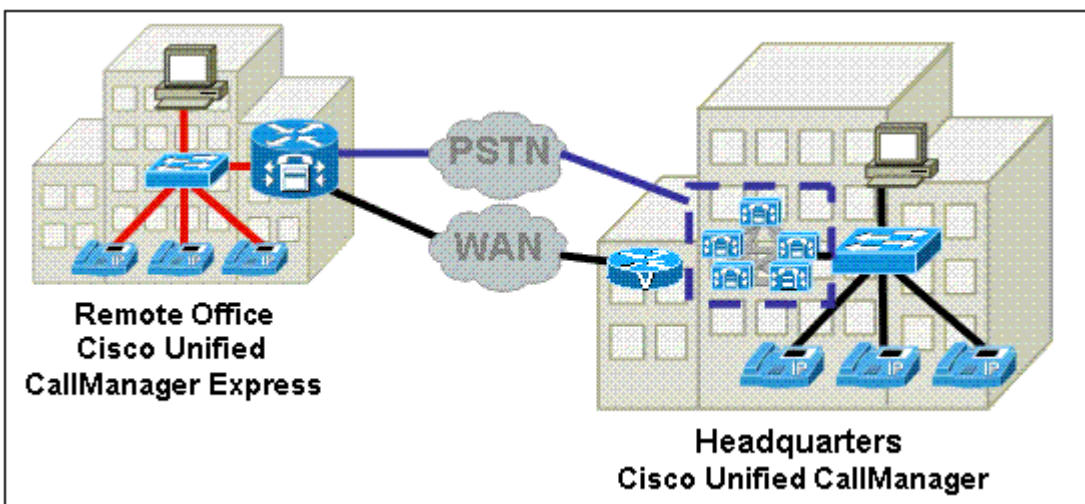
**Answer: AB**

2. The Clinton Howe Weights and Measures Company wants to send CDRs to a syslog server. Which two options are required? (Choose two.)

- A. The CDR collection must be enabled from the CLI.
- B. The syslog server IP address must be configured using the logging command.
- C. The CDRs must be sent to the syslog server using the gw-accounting syslog command.
- D. The logging file must be initialized using the logging buffered command.

**Answer: BC**

3. Refer to the exhibit. Where would a Cisco Unity Express Network Module physically reside?



- A. PC at headquarters
- B. PC at the remote office
- C. voice-enabled router at headquarters
- D. Cisco Unified CallManager publisher at headquarters

- E. Cisco Unified CallManager subscriber at headquarters
- F. Cisco Unified CallManager Express router at the remote office

**Answer: F**

4. Refer to the exhibit. The Hamilton Hair Emporium was having difficulty hearing during conference calls. This configuration adjustment was made, and now the company is experiencing sound distortion. What is the cause?

```
HHERouter(config-telephony)#max-conference 12 gain 6
```

- A. The gain functionality applies to outbound audio packets. Distortion is created when an external participant causes echo.
- B. The distortion is unrelated to the gain functionality. Rather, it is a result of the company trying to maintain too many conference calls at one time.
- C. This functionality cannot discriminate between a local VoIP source that requires volume gain and a CO-powered PSTN source that does not require volume gain.
- D. This functionality cannot discriminate between a remote VoIP or Foreign Exchange Office source that requires volume gain, and a remote VoIP or IP phone that does not require volume gain.

**Answer: D**

5. The network administrator at Silver Ball GeneralCom has downloaded the cme-gui-xxx.xx.tar file ("xxx.xx" represents the version number of the file) for Cisco Unified CallManager Express. Which file will be extracted?

- A. xml.template
- B. normal\_user.js
- C. music-on-hold.au
- D. ATA030100SCCP040211A.zip

**Answer: B**

6. Which two of the following must be configured to allow users to blind transfer calls to both internal and PSTN numbers using H.450.2 supplementary services? (Choose two.)

- A. transfer-pattern .T

- B. transfer-system full-blind
- C. supplemental service h.450.2
- D. allow-connections h323 to h323

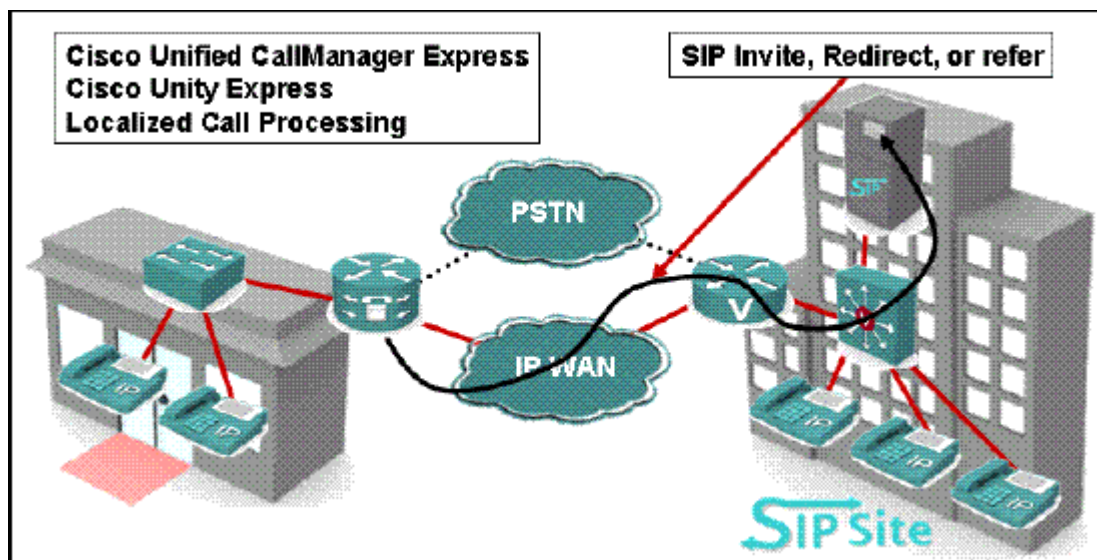
**Answer: AB**

7. Which statement best describes echo?

- A. Echo is the discernable leak-through of your own Rx path into your own Tx path.
- B. Echo is the discernable leak-through of the packets of your Rx path into your own Tx path.
- C. Echo is the nonaudible leak-through of the packets of your Rx path into your own Tx path.
- D. Echo is the audible leak-through of the packets from the transmit path into your own receive path.
- E. Echo is the nonaudible leak-through of the packets of your Tx path into your own Rx path.

**Answer: D**

8. Refer to the exhibit. The Greene Supply Company is integrating Cisco Unified CallManager Express into a SIP network. Which two statements are accurate? (Choose two.)



- A. SIP support in dial peers is a Cisco IOS function.
- B. Use the notify-based DTMF relay mechanism that is proprietary to Cisco.
- C. SIP support in Cisco IOS is a function of localized call processing integrated with Cisco Unity Express.
- D. Use either the notify-based DTMF relay mechanism that is proprietary to Cisco or the RFC-based DTMF relay.
- E. The SIP server must be configured for the E.164 numbers that are going to register with the Cisco

CallManager Express database.

**Answer: AD**

9. Which two characteristics apply to a CAS T1 interface? (Choose two.)

- A. signaling travels in-band
- B. up to 24 voice channels
- C. up to 32 voice channels
- D. signaling travels in time slot 17
- E. uses Q.931 signaling protocol in a common channel

**Answer: AB**

10. The Abigail Braintree Foundation is a medium-size, not-for-profit literacy group that wants to implement centralized call processing. The group will implement a hub-and-spoke topology, with all of the remote branches utilizing Cisco Unified CallManager Express connected to the central site using Cisco Unified CallManager via an IP WAN. The remote branch will be limited to 150 IP phones so the local gateway can provide SRST feature through Cisco CallManager Express. Each time a remote branch phone places a call, the control traffic traverses the IP WAN (even if the call is local to the branch) to reach the Cisco Unified CallManager at the central site. All the control traffic is exchanged between a Cisco Unified CallManager at the central site and endpoints or gateways at the remote branches.

Which two signaling protocols can traverse the IP WAN in this deployment model? (Choose two.)

- A. SCCP
- B. SCGP
- C. H.323
- D. H.450.1
- E. H.450.2

**Answer: AC**

11. Which two are functions of an IP voice gateway? (Choose two.)

- A. provide far-end call control
- B. provide far-end camera control

- C. translate analog voice to packetized voice
- D. transition call path between different networks
- E. provide locations-based call admission control

**Answer:** CD

12. You wish to verify that the pilot point number has been configured correctly in your CUE module. Using the show ccn trigger command provides the following output:

```
cue-10-0-0# show ccn trigger
```

```
Name: 6800
```

```
Type: SIP
```

```
Application: voicemail
```

```
Locale: en_US
```

```
Idle Timeout: 5000
```

```
Enabled: yes
```

```
Maximum number of sessions: 8
```

```
Name: 6700
```

```
Type: SIP
```

```
Application: autoattendant
```

```
Locale: en_US
```

```
Idle Timeout: 5000
```

```
Enabled: yes
```

```
Maximum number of sessions: 8
```

```
cue-10-0-0#
```

What pieces of information can you derive from this output? (Choose two.)

- A. The voice-mail pilot point number is 6800.
- B. The number of ports available is 16.
- C. The idle timeout is 5 seconds.
- D. The operator can be reached at extension 6800.
- E. The voice-mail application is enabled.

**Answer:** AE

13. Your IP telephony manager wants you to configure an FXS port on a voice-enabled router with these requirements:

- 1) It supports ground-start signaling.
- 2) Calling name is James Smith.
- 3) Calling number is 408-555-1212.
- 4) Ring frequency is 25hz.
- 5) Ring cadence is for Germany.

Which configuration will meet these requirements?

A. voice-port 1/0/0

signal ground-start

cptone DE

ring frequency 25

station-id name James Smith

station-id number 4085551212

B. voice-port 1/0/0

description extension 555-1212, name "James Smith"

signal ground-start

ring cadence DE

ring frequency 25

C. voice-port 1/0/0

description extension 555-1212, name "James Smith"

ring cadence Germany

ring frequency 25

station-id name James Smith

station-id number 5551212

D. voice-port 1/0/0

signal ground-start

cadence Germany

frequency 25

station-id name James Smith

station-id number 4085551212

**Answer: A**

14. Which protocol is required for an IP Phone to register with Cisco CallManager Express?

- A. TFTP
- B. DHCP
- C. NTP
- D. FTP
- E. AAA

**Answer: A**

15. Which two installations must be completed to allow third-party software to interact with the Cisco Unified CallManager Express system through TAPI Lite? (Choose two.)

- A. the files in the Cisco IOS TSP file on all Windows PCs on the LAN
- B. both the Cisco IOS TSP and TAPI Lite files on all Windows PCs on the LAN
- C. the Cisco TAPI Lite files on the same Windows PC where the software is installed
- D. the files in the Cisco IOS TSP file on the same Windows PC where the software is installed
- E. the Cisco IOS TSP on the same Windows PC where the software is installed and on all remote teleworker PCs

**Answer: CD**

Examsoon.com was founded in 2006. The safer,easier way to help you pass any IT Certification exams . We provide high quality IT Certification exams practice questions and answers(Q&A). Especially [Adobe](#), [Apple](#), [Citrix](#), [Comptia](#), [EMC](#), [HP](#), [Juniper](#), [LPI](#), [Nortel](#), [Oracle](#), [SUN](#), [Vmware](#) and so on. And help you pass any IT Certification exams at the first try.

we guarantee your success at the first attempt with only our Certification Question&Answers, if you do not pass the exam at the first time, we will not only arrange FULL REFUND for you, but also provide you another exam of your claim, ABSOLUTELY FREE!

You can reach us at any of the email addresses listed below.

E-MAIL: [examsoon\(at\)hotmail.Com](mailto:examsoon(at)hotmail.Com)