

Exam : Symantec 250-700

**Title : Implementation of HA
Solutions for Windows
using VCS 4.1**

Version : Demo

Important Note, Please Read Carefully

Other examsoon products

[All examsoon IT Exam Products](#)

Our products of Offline Testing Engine

Use the offline Testing engine product to practice the questions in an exam environment.

Build a foundation of knowledge which will be useful also after passing the exam.

[examsoon Testing Engine](#)

Guarantee

Examsoon provides the most competitive quality of all exams for the customers, we guarantee your success at the first attempt with only our Certification Question&Answers, if you do not pass the exam at the first time, we will not only arrange FULL REFUND for you, but also provide you another exam of your claim, ABSOLUTELY FREE!.

Features

1. Comprehensive questions with complete details
2. Instant Downloadable in PDF form.
3. Verified Answers Researched by Industry Experts
4. Questions accompanied by exhibits
5. Drag and Drop questions as experienced in the Actual Exams.
6. These questions and answers are backed by our GUARANTEE.
7. Questions updated on regular basis.
8. Like actual certification exams our product is in multiple-choice questions (MCQs).

1. You want to verify that systems are suitable for a VCS clustered application. Which three items do you verify on the systems? (Choose three.)

- A. operating system licenses
- B. operating system patch levels
- C. amount of memory in each system
- D. systems listed in VCS Hardware Compatibility List

Answer: BCD

2. Which two things need to be confirmed before installing VCS? (Choose two.)

- A. verify that all required Operating System patches are installed on each system
- B. verify that private Ethernet heartbeats reside on consecutive network subnets
- C. identify the Cluster ID of any other VCS cluster with heartbeat connections on the same subnet
- D. all applications that are to be clustered are offline prior to installing VCS
- E. ensure that one system is set up as a license manager for all applications that will be clustered

Answer: AC

3. There is a requirement for an application to remain online when a public network interface fails in a two-system VCS cluster. Which hardware configuration is required to configure this behavior in VCS?

- A. Multiple public network interfaces must be present on each system.
- B. One network interface per system will work as long as two or more switches are present.
- C. VCS will fail over the application any time any network interface fails on a system.
- D. Multiple network interfaces must be on the same controller card on each system.

Answer: A

4. Which two security group memberships are required to add a system to a cluster? (Choose two.)

- A. Domain Administrator in the domain
- B. Enterprise Administrator in the domain
- C. Local Administrator for the new system
- D. Domain User in the domain

Answer: AC

5. You are planning to install both VERITAS Cluster Server and VERITAS Storage Foundation. You will also be changing the application environment over the course of the next 18 months. Increasing the number of _____ will require modification of the VCS configuration. (Choose three.)

- A. highly available applications
- B. file systems used by the highly available applications
- C. disk groups used by the highly available applications
- D. disks in the disk group used by the highly available applications

Answer: ABC

6. You are the administrator of a VCS cluster. You want to add another system to the cluster. Which two security group memberships are required on the new system to add the system to the cluster? (Choose two.)

- A. Domain Administrator
- B. Enterprise Administrator
- C. Local Administrator
- D. Domain User

Answer: AC

7. Which three elements are components of a base VCS installation? (Choose three.)

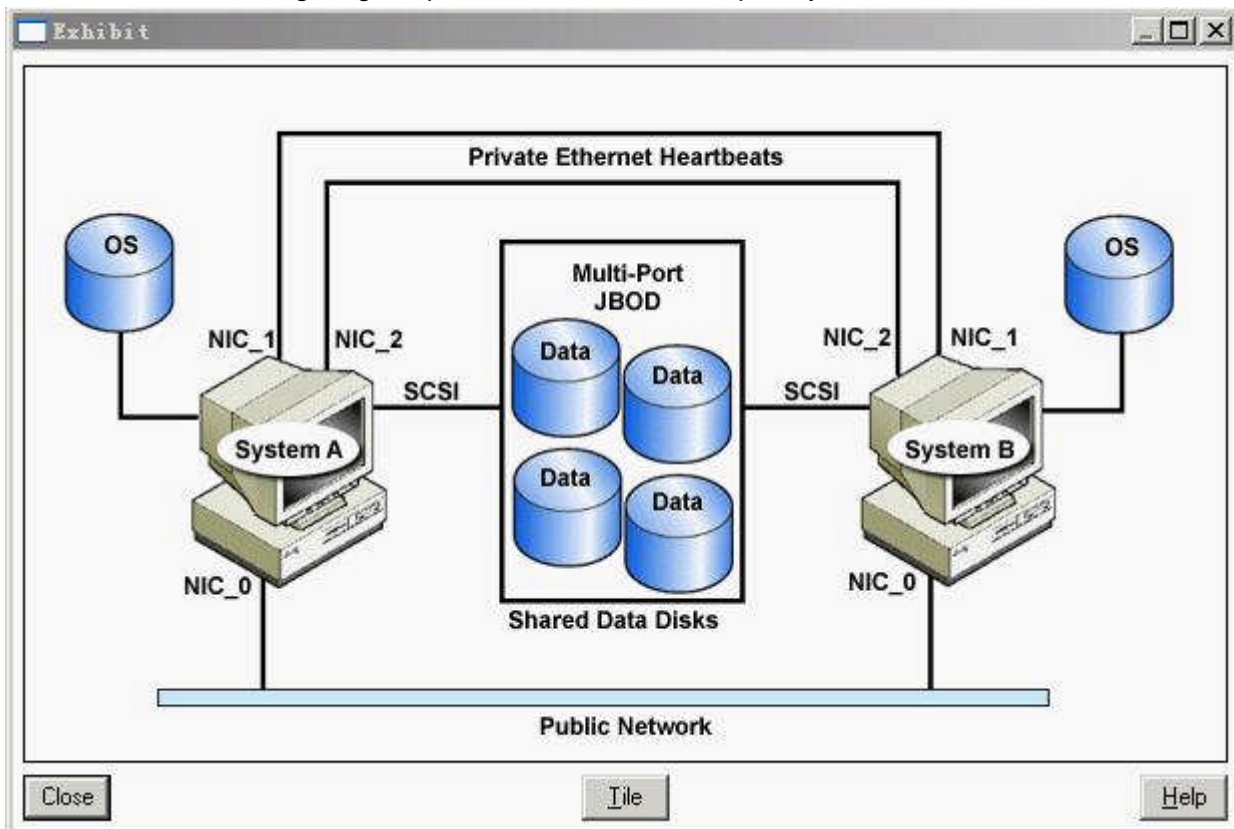
- A. bundled agents
- B. custom agents
- C. PERL
- D. GAB Drivers
- E. cluster simulator

Answer: ACD

8. Click the Exhibit button.

The diagram shows a proposed HA configuration.

What effect would configuring the public NIC to handle low-priority heartbeats have?



- A. provides additional protection from split brain
- B. improves LLT and GAB traffic load balance

- C. prevents the cluster from going into jeopardy if both private heartbeats fail
- D. provides additional availability for the public NIC

Answer: A

9. Which command is used to install VCS for Windows in an unattended mode?

- A. setup.exe
- B. vxinstall.exe
- C. install.exe
- D. vxsilent.exe

Answer: A

10. VCS needs to be patched on systems running in a production environment. There are two service groups currently running in a cluster that has two systems. VCS must be stopped on all systems in the cluster in order to apply the patch without any application downtime. What is the proper VCS command to accomplish this?

- A. hastop -all
- B. hastop -all -force
- C. hapause -upgrade
- D. hasys -stop

Answer: B

11. You can determine if resource attributes are valid in VCS by running the _____.

- A. hares -probe command and checking the VCS probe log
- B. hares -probe command and checking the VCS engine log
- C. haprobe -resource command and checking the VCS resource log
- D. haprobe -resource command and checking the VCS engine log

Answer: B

12. AutoStartList is dependent on which service group attribute?

- A. SystemList
- B. SystemPolicy
- C. FailoverList
- D. FailoverPolicy

Answer: A

13. During VCS configuration, the VCS notifier is to be configured to send messages to the SNMP console named snmpserv. Which two additional pieces of information are needed to configure the notifier for SNMP? (Choose two.)

- A. the location of the SNMP VCS MIB
- B. the port number to use on the console

- C. the e-mail address of the user to whom to send traps
- D. the severity of messages to send to the console
- E. the user name on the system in which to send the messages

Answer: BD

14. What are two functions of service group dependencies? (Choose two.)

- A. provide a mechanism by which service groups can fail over based on network bandwidth availability
- B. control VCS user parameters following events like faults, auto group start, and system shutdown
- C. provide a mechanism by which two service groups can be linked by rules similar to the way that resources are linked
- D. provide a mechanism by which two service groups can change their resource structure during failover
- E. control where VCS brings a group online following events like faults, auto group start, and system shutdown

Answer: CE

15. How many systems in the cluster can the NotifierMngr run on at one time?

- A. 1
- B. 2
- C. 4
- D. an unlimited number

Answer: A

Examsoon.com was founded in 2006. The safer,easier way to help you pass any IT Certification exams . We provide high quality IT Certification exams practice questions and answers(Q&A). Especially [Adobe](#), [Apple](#), [Citrix](#), [Comptia](#), [EMC](#), [HP](#), [Juniper](#), [LPI](#), [Nortel](#), [Oracle](#), [SUN](#), [Vmware](#) and so on. And help you pass any IT Certification exams at the first try.

we guarantee your success at the first attempt with only our Certification Question&Answers, if you do not pass the exam at the first time, we will not only arrange FULL REFUND for you, but also provide you another exam of your claim, ABSOLUTELY FREE!

You can reach us at any of the email addresses listed below.

E-MAIL: [examsoon\(at\)hotmail.Com](mailto:examsoon(at)hotmail.Com)