

**Exam : IBM 000-890**

**Title : IBM Tivoli Monitoring V6.1  
Implementation**

**Version : Demo**

## Important Note, Please Read Carefully

### Other examsoon products

[All examsoon IT Exam Products](#)

### Our products of Offline Testing Engine

Use the offline Testing engine product to practice the questions in an exam environment.

Build a foundation of knowledge which will be useful also after passing the exam.

[examsoon Testing Engine](#)

### Guarantee

Examsoon provides the most competitive quality of all exams for the customers, we guarantee your success at the first attempt with only our Certification Question&Answers, if you do not pass the exam at the first time, we will not only arrange FULL REFUND for you, but also provide you another exam of your claim, ABSOLUTELY FREE!.

### Features

1. Comprehensive questions with complete details
2. Instant Downloadable in PDF form.
3. Verified Answers Researched by Industry Experts
4. Questions accompanied by exhibits
5. Drag and Drop questions as experienced in the Actual Exams.
6. These questions and answers are backed by our GUARANTEE.
7. Questions updated on regular basis.
8. Like actual certification exams our product is in multiple-choice questions (MCQs).

1. Where is the IBM Tivoli Monitoring V5.x Endpoint Agent installed?

- A.the TMR server and all endpoint gateways
- B.Tivoli endpoints running IBM Tivoli Monitoring V5.1.2 (ITM) resource models
- C.every endpoint gateway supporting ITM 5.1.2 endpoints with resource models
- D.the TMR server and Tivoli endpoints running IBM Tivoli Monitoring V5.1.2 (ITM) resource models

**Answer: B**

2. Which three databases are supported for Tivoli Data Warehouse? (Choose three.)

- A.UDB V7.2
- B.UDB V8.2
- C.Oracle V9.2
- D.Sybase V12
- E.Informix V10.0
- F.MS SQL Server 2000

**Answer: BCF**

3. Which prerequisite must be installed in order to install the Monitoring Agent for IBM Tivoli Monitoring V5.x Endpoint in an existing IBM Tivoli Monitoring V5.1.x (ITM) environment?

- A.JRE V1.4
- B.ITM V5.1.1
- C.ITM V5.1.1 Component Services
- D.ITM V5.1.3 Component Services

**Answer: D**

4. The system administrator attempts the reinstallation of Tivoli Enterprise Monitoring Server (TEMS) and Tivoli Enterprise Portal Server (TEPS) on a Windows platform that was just uninstalled. The reinstallation indicates that the product is already installed and upon checking the system the previous install\_path is not there and Add/Remove programs does not show IBM Tivoli Monitoring installed. What two things can be the cause of this issue? (Choose two.)

- A.The sysadmin user ID still exists.

- B.Delete the user ID used to install the previous installation.
- C.Remove the TEPS database and ODBC System DSN entry.
- D.Drop the DB2 instance where the TEPS was previously installed.
- E.Edit the Windows registry and remove the HKEY\_LOCAL\_MACHINE\Software\Candle entry.

**Answer: CE**

5. Which statement is correct regarding Tivoli Enterprise Monitoring Server (TEMS)?

- A.Adding application support to the TEMS can be done on Windows but not Linux or UNIX using CLI.
- B.Adding application support to the TEMS can be done on Linux or UNIX but not Windows during installation.
- C.Adding application support to the TEMS can be done on both Windows and Linux or UNIX during installation.
- D.Adding application support to the TEMS server can be done on Windows but not Linux or UNIX during installation.

**Answer: D**

6. When configuring the Warehouse Proxy Agent and corresponding ODBC connection, what information will the user be prompted for? (Choose two.)

- A.location of the database
- B.warehouse URL (for example dbc:db2:Warehouse)
- C.database type (DB2, Oracle, SQL Server, Other Database Type)
- D.warehouse driver (for example COM.ibm.db2.jdbc.app.DB2Driver)
- E.protocol to use to connect to the hub Tivoli Enterprise Monitoring Server (IP.PIPE, IP.UDP)

**Answer: CE**

7. What occurs each time the command `witmscantmr v f` is run?

- A.the baseline file is rewritten
- B.a verbose output is shown on the screen
- C.the baseline file name is used as output file
- D.a new file containing the actual status is written

**Answer: D**

8. There are multiple methods by which the trace level can be changed. Which three methods can change the trace level of the Monitoring Agent for IBM Tivoli Monitoring 5.x Endpoint? (Choose three.)

A.Run `wep set_config KBB_RAS1=`.

B.Run `wdmtrceng e "" KBB_RAS1=`.

C.Set the environment variable `KBB_RAS1` for the user that will start the agent.

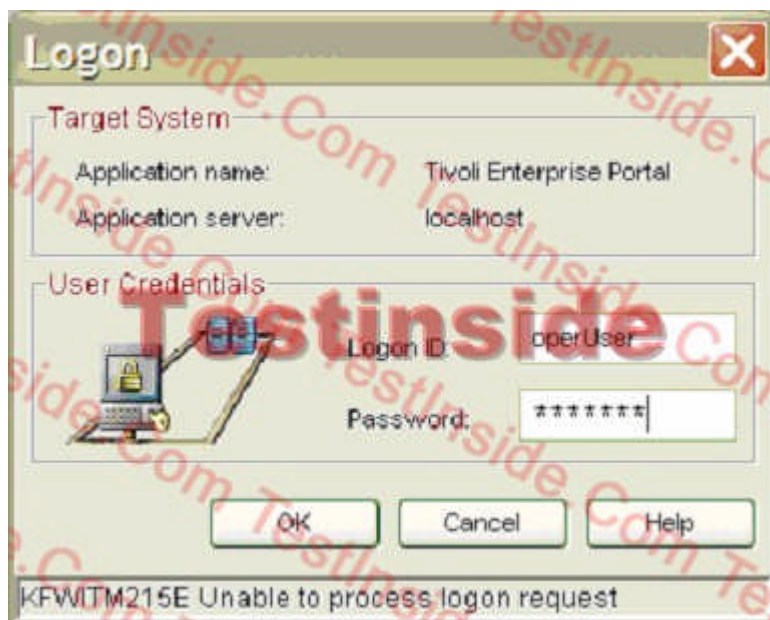
D.On a Windows agent edit the registry entry for the `KBB_RAS1` for `KTMENV` setting the key value to zero.

E.Modify the `KBB_RAS1` variable located in `$LCF_DATDIR/LCFNEW/KTM/KTMENV` file and restart the agent.

F.On a Windows agent use Manage Tivoli Services, select the Monitoring Agent for IBM Tivoli Monitoring 5.x Endpoint, right-click, select Advanced, then Edit Trace Parms and set the `RAS1` trace level. Restart the agent for the change to take effect.

**Answer: CEF**

9. Click the Exhibit button.



An operations user reports that they cannot log in to the Tivoli Enterprise Portal Server (TEPS). The error message "KFWITM215E Unable to process log on request" is displayed.

What three things would you check to determine the cause of this error? (Choose three.)

A.Make sure that LDAP is running.

- B. Make sure that the TEPS database is running.
- C. Make sure that the user is defined to the TEPS database.
- D. Make sure that the Tivoli Enterprise Console Server is running.
- E. Make sure that NIS is running on the Tivoli Enterprise Monitoring Server (TEMS).
- F. Since a password was entered make sure that security is enabled on the TEMS and that the user is defined on the TEMS system.

**Answer:** BCF

10. Given a Windows Tivoli Enterprise Portal Server (TEPS) how do you verify the ODBC entry for the TEPS is valid?

- A. Run `itmcmd config A o cq`.
- B. Run `install_dir\CNPS\bin\kfwodbc.exe c u -p`.
- C. Open Manage Tivoli Enterprise Services, right-click the TEPS, select Advanced, select Test Database Connection.
- D. Open the ODBC Data Source Administrator, select System DSN, select the TEPS2 entry, click Configure, enter the database user ID and password and click Connect.

**Answer:** D

11. Which action causes the Summarization and Pruning Agent to summarize historical data, and place data into the warehouse database?

- A. The Shift Period has expired, so the agent automatically runs.
- B. A view is opened in a workspace that requests summarized data.
- C. It is a defined Work Day and the agent has been scheduled to run.
- D. The time when it is scheduled to run in the configuration has been reached.

**Answer:** C

12. When planning a deployment of IBM Tivoli Monitoring V6.1, what are three considerations of network design that need to be planned for? (Choose three.)

- A. number and location of firewalls
- B. line speed of each network connection

- C.software configuration of the computers to be monitored
- D.number of resources to be monitored at remote locations
- E.hardware configuration of the computers to be monitored
- F.the applications on each computer that need to be monitored

**Answer:** ABD

13. When planning a deployment of IBM Tivoli Monitoring, what are two considerations of organizational factors that might have an impact on deployment? (Choose two.)

- A.network reliability
- B.host naming conventions
- C.amount of growth anticipated for the environment
- D.the computers and applications that are mission critical
- E.number and responsibilities of existing systems administrators

**Answer:** CE

14. In a typical customer deployment that contains 3500 OS agents, what would be the typical number of hub and remote Tivoli Enterprise Monitoring Server (TEMS) required?

- A.one hub TEMS and six remote TEMS
- B.two hub TEMS and six remote TEMS
- C.two hub TEMS and seven remote TEMS
- D.one hub TEMS and seven remote TEMS

**Answer:** D

15. Which two databases are supported on both the Tivoli Enterprise Portal Server and Tivoli Data Warehouse components of IBM Tivoli Monitoring? (Choose two.)

- A.Oracle
- B.Sybase
- C.Informix
- D.IBM DB2 UDB
- E.Microsoft SQL Server

**Answer: DE**

16. A UNIX server is running three instances of DB2 in production. How many agents will need to be installed to monitor the UNIX operating system, the UNIX logs, and DB2?

A.1

B.3

C.5

D.6

**Answer: C**

17. If you have 2000 agents within your IBM Tivoli Monitoring environment, what would be the typical number of Tivoli Enterprise Monitoring Server (TEMS)?

A.1 hub TEMS and 5 remote TEMS

B.2 hub TEMS and 2 remote TEMS

C.1 hub TEMS and 4 remote TEMS

D.2 hub TEMS and 1 remote TEMS

**Answer: C**

18. What are the minimum hardware requirements for a Tivoli Enterprise Portal Server?

A.Single 1 GHz processor, 1 GB RAM, and 800 MB of disk

B.Single 2 GHz processor, 2 GB RAM, and 800 MB of disk

C.Single 1 GHz processor, 2 GB RAM, and 500 MB of disk

D.Single 2 GHz processor, 1 GB RAM, and 500 MB of disk

**Answer: A**

19. When planning the hardware requirements of IBM Tivoli Monitoring, which component will require the most amount of RAM when compared to the other components?

A.portal server

B.hub monitoring server

C.remote monitoring server

D.warehouse database server

**Answer: D**

20. A large IBM Tivoli Monitoring environment contains four thousand agents. Two hub Tivoli Enterprise Monitoring Server (TEMS) are installed along with ten remote TEMS.

How many Tivoli Enterprise Portal Server(s) (TEPS), Tivoli Data Warehouse (TDW) server(s), and Warehouse Proxy agent(s) are required within this environment?

A.1 TEPS, 1 TDW server, and 1 Warehouse Proxy agent

B.2 TEPS, 1 TDW server, and 1 Warehouse Proxy agent

C.2 TEPS, 1 TDW server, and 2 Warehouse Proxy agents

D.2 TEPS, 2 TDW servers, and 2 Warehouse Proxy agents

**Answer: C**

Examsoon.com was founded in 2006. The safer,easier way to help you pass any IT Certification exams . We provide high quality IT Certification exams practice questions and answers(Q&A). Especially [Adobe](#), [Apple](#), [Citrix](#), [Comptia](#), [EMC](#), [HP](#), [Juniper](#), [LPI](#), [Nortel](#), [Oracle](#), [SUN](#), [Vmware](#) and so on. And help you pass any IT Certification exams at the first try.

we guarantee your success at the first attempt with only our Certification Question&Answers, if you do not pass the exam at the first time, we will not only arrange FULL REFUND for you, but also provide you another exam of your claim, ABSOLUTELY FREE!

You can reach us at any of the email addresses listed below.

E-MAIL: [examsoon\(at\)hotmail.Com](mailto:examsoon(at)hotmail.Com)