

Exam : IBM 000-015

**Title : IBM Maximo Asset
Management V7.1
Implementation**

Version : Demo

Important Note, Please Read Carefully

Other examsoon products

[All examsoon IT Exam Products](#)

Our products of Offline Testing Engine

Use the offline Testing engine product to practice the questions in an exam environment.

Build a foundation of knowledge which will be useful also after passing the exam.

[examsoon Testing Engine](#)

Guarantee

Examsoon provides the most competitive quality of all exams for the customers, we guarantee your success at the first attempt with only our Certification Question&Answers, if you do not pass the exam at the first time, we will not only arrange FULL REFUND for you, but also provide you another exam of your claim, ABSOLUTELY FREE!.

Features

1. Comprehensive questions with complete details
2. Instant Downloadable in PDF form.
3. Verified Answers Researched by Industry Experts
4. Questions accompanied by exhibits
5. Drag and Drop questions as experienced in the Actual Exams.
6. These questions and answers are backed by our GUARANTEE.
7. Questions updated on regular basis.
8. Like actual certification exams our product is in multiple-choice questions (MCQs).

1. Which applications record the history of attribute changes made on the Specifications tab, without having to use e-Audit as defined in Database Configuration?

- A.Asset, Configuration Item
- B.Job Plan, Ticket Template
- C.Item Master, Service Item, Tool, Job Plan
- D.Asset, Location, Item Master, Service Item, Tool

Answer: A

2. The appropriate status to invoke a Preventive Maintenance (PM) alert has been determined to be in the Organization application.

What is the Select Action menu item where this can be set?

- A.PM options
- B.Asset options
- C.System settings
- D.Work Order options

Answer: A

3. What is the purpose of a Condition Rate?

- A.to create alternate paths in Workflows
- B.to assign relative values to inventory items
- C.to assign values to personnel for labor purposes
- D.to indicate the costs associated with inventory items

Answer: B

4. When creating a purchase contract, what is the purpose of checking the Change Price on Use field?

- A.It specifies that the price in the purchase order (PO) is only an estimated price.
- B.It specifies that when a PO is issued against this contract, the price must be changed.
- C.It specifies that the price of a given related item can be changed on related POs or purchase requests.
- D.It specifies that the price of a given item specified in the Master Contract is reduced or increased, based on market conditions.

Answer: C

5. When can Material Receipts be changed if inspection is not required?

- A.prior to saving the Receipt Line
- B.prior to inspecting the Receipt Line
- C.prior to approving the Receipt Line
- D.prior to completing the Receipt Line

Answer: A

6. What is a Failure Code hierarchy?

- A.Problem, Cause, Remedy hierarchy based on a Work Classification
- B.Problem, Cause, Remedy hierarchy based on an Asset Classification
- C.Problem, Cause, Remedy hierarchy based on a Failure Classification
- D.Problem, Cause, Remedy hierarchy based on a Location Classification

Answer: C

7. Where are Ticket Templates used?

- A.Work Requests
- B.Service Requests
- C.Desktop Requisitions
- D.Work Order Tracking

Answer: B

8. Which three objects have rotating records? (Choose three.)

- A.Person
- B.Assets
- C.Locations
- D.Job Plans
- E.Item Master
- F.Service Items

Answer: BCE

9. Which item type(s) can be used as a rotating item on both an Asset and a Location?

- A.Item only
- B.Item and Tool only
- C.Item, Service Item, Tool
- D.Item and Service Item only

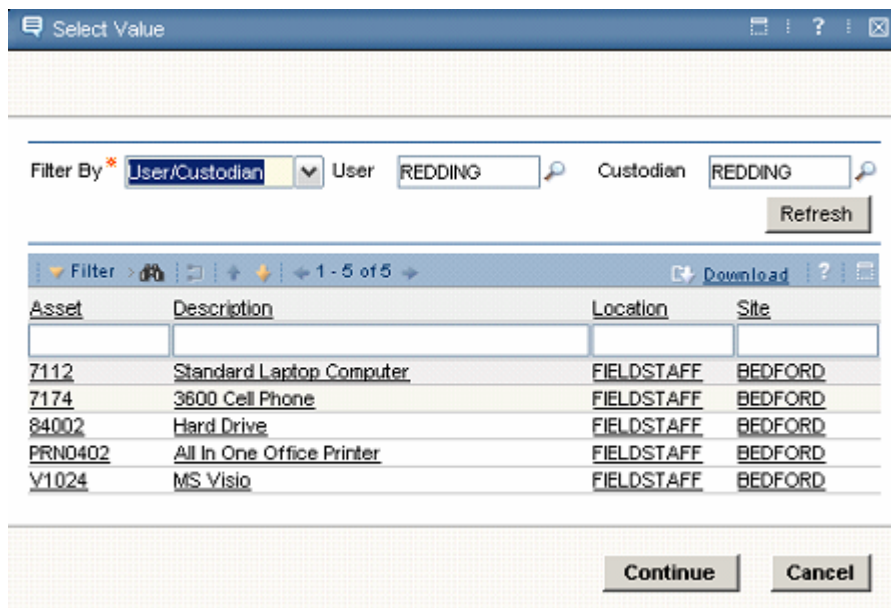
Answer: B

10. Click the Exhibit button.

The diagram in the exhibit shows a dialog box that opens when the Select Value option is selected from the Asset or Location field on a Service Request. The Filter By field has three options User/Custodian, Public and All.

In which application can the default for this field be changed?

- A.Organizations
- B.Service Requests
- C.Application Designer
- D.Database Configuration



Answer: D

11. Which statement is true about the Users and Custodians functionality?

A.Users and Custodians can be created for Assets. A User is someone who uses the Asset. A Custodian is someone responsible for the care of the Asset. For each person entered, the User field, the Custodian field or both must be checked. One person can be nominated as the Primary Contact for the Asset.

B.Users and Custodians can be created for Assets and Locations. A User is someone who uses the Asset or Location. A Custodian is someone responsible for the care of the Asset or Location. For each person entered, either the User field or the Custodian field or both fields must be checked. One person can be nominated as the Primary Contact for the Asset or Location.

C.User and Custodians can be created for Assets, Locations and Configuration Items (CIs). The dialog box has a table window for creating Users and Custodians and another for creating Primary Contacts who are used for communicating information about the Asset, Location or CI by email or bulletin board. A person can be a user or a custodian, or both a user and a custodian.

D.Users and Custodians can be created for Assets and Locations. A User is someone who uses the Asset. A Custodian is someone responsible for the care of the Asset. The Primary Contact is used for communicating information about the Asset or Location by email or bulletin board. These three fields act like a radio button, only one of them can be checked on each person record.

Answer: B

12. Which statement is correct?

A.Any type of Ticket or Work Order can be created from the Asset, Location and Configuration Item (CI) applications.

B.A Service Request, Incident, Problem, Work Order, Change or Release in the Assets, Locations and CI applications can be created.

C.A Service Request or Work Order can be created from the Assets and Locations applications. A Ticket or Work Order cannot be created from the CI application.

D.Any type of Ticket or Work Order can be created from the Assets and Locations applications, but you can not create an activity or task. A Ticket or Work Order cannot be created from the CI application.

Answer: B

13. From which three applications is it possible to create a Work Order? (Choose three.)

- A.Assets
- B.Routes
- C.Job Plan
- D.Work View
- E.Configuration Items
- F.Condition Monitoring

Answer: AEF

14. Which field(s) are hidden on the Asset application and may need the Application Designer in order to display them?

- A.Priority
- B.Failure Class
- C.Calendar and Shift Number
- D.GL Account, Warranty Expiry Date

Answer: D

15. Which Asset fields must have data for the record to be saved to the database?

- A.Site, Location, Type
- B.Site, Status, Location
- C.Site, Status, Asset Up?
- D.Status, Location, Failure Class

Answer: C

16. Which statement is correct?

- A.When creating an Asset, it can be added directly to any storeroom by specifying a Location and rotating item. The balance in the storeroom is incremented by one.
- B.To add a rotating Asset to a storeroom, use the Inventory application and then use the Inventory Adjustments - Current Balance action to increment the balance by one.
- C.When creating an Asset, it can be added directly to a specific site's storeroom by specifying a Location and rotating item. The balance in the storeroom is incremented by one.

D. When creating an Asset that will be initially held in a storeroom, the user creates the Asset then goes to the Storeroom application in order to book it into a specific storeroom so that the balance is incremented by one.

Answer: C

17. Which statement is correct?

A. A condition code can be used on any rotating Asset.

B. A condition code can be added to any type of Asset.

C. A condition code can only be used on a rotating Asset when the item is condition enabled.

D. There is no condition code on an Asset. Condition codes are only associated with items that are purchased or held in a storeroom.

Answer: C

18. Which statement is correct?

A. The classification of a rotating Asset is determined from the classification belonging to its rotating item. The value of an Asset specification record is always updateable.

B. The classification of a rotating Asset is determined from the classification belonging to its rotating item. The value of an Asset specification record is determined from the corresponding attribute's value on the item specification.

C. The classification of a rotating Asset can be entered by the user and the Asset specification is derived from the classification you enter. The value of an attribute can be entered by the user. There is no relationship with the item specification.

D. The classification of a rotating Asset is enterable only if its rotating item has no classification of its own. When the classification has been entered by the user on the Asset, the attribute values are updateable. Otherwise, they are read-only and are determined from the corresponding attribute's value on the item specification.

Answer: B

19. An attribute is added to a ClassStructure record in the Classifications application.

On which applications will the attribute be copied to existing records that use this classification?

- A.Assets, Item, Locations
- B.Job Plan, Ticket Template, Item
- C.all applications that have a Specifications tab
- D.Assets, Item, Job Plan, Preventive Maintenance

Answer: A

20. What are the three types of meters?

- A.Flow, Utility, Rate
- B.Condition, Utility, Gauge
- C.Continuous, Condition, Rate
- D.Continuous, Gauge, Characteristic

Answer: D

Examsoon.com was founded in 2006. The safer,easier way to help you pass any IT Certification exams . We provide high quality IT Certification exams practice questions and answers(Q&A). Especially [Adobe](#), [Apple](#), [Citrix](#), [Comptia](#), [EMC](#), [HP](#), [Juniper](#), [LPI](#), [Nortel](#), [Oracle](#), [SUN](#), [Vmware](#) and so on. And help you pass any IT Certification exams at the first try.

we guarantee your success at the first attempt with only our Certification Question&Answers, if you do not pass the exam at the first time, we will not only arrange FULL REFUND for you, but also provide you another exam of your claim, ABSOLUTELY FREE!

You can reach us at any of the email addresses listed below.

E-MAIL: [examsoon\(at\)hotmail.Com](mailto:examsoon(at)hotmail.Com)